

The Empire of Japan

- ❁ September 18, 1931. Japan invades Manchuria, China.
- ❁ 1933. Japan leaves the League of Nations.
- ❁ July 7th, 1937. Japan launches a major assault on the rest of China.
- ❁ September 22nd, 1940. Japan invades French Indo-China.
- ❁ September 27th, 1940. The Tripartite Pact is signed by Japan, Italy and Germany.
- ❁ December 7th, 1941. Japan attacks Pearl Harbour in a surprise attack. **BEGINNING OF LIGHTENING WAR.** Over the next month Japan invades Wake Island, the Gilbert Islands, Guam, and **HONG KONG.**
- ❁ January 2nd, 1942. The Japanese invade the Philippine Islands.
- ❁ January 11th, 1942. The Japanese invade the Dutch East Indies.
- ❁ February 14th, 1942. Singapore surrenders to Japan.
- ❁ June 7th, 1942. Battle of Midway ends in U.S. Victory, ending Japanese expansion east.



Emperor Hirohito of Japan



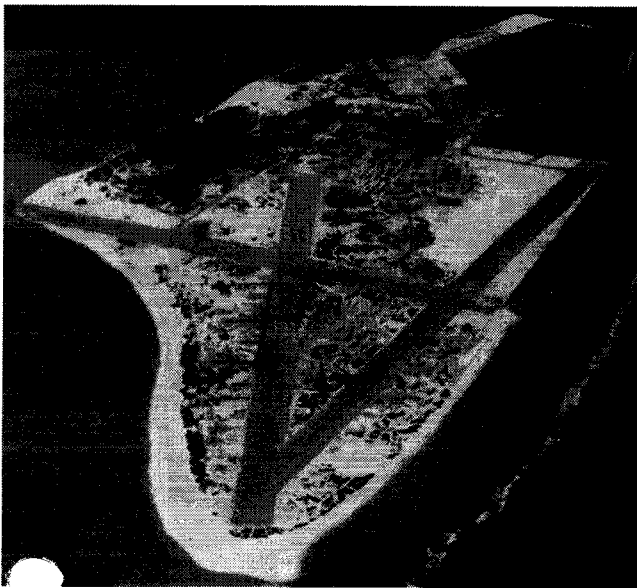
The Japanese Empire at its greatest extent – 1942

Why were the Japanese expanding into the Pacific?

- ❁ Japan's military leaders had a lot of influence in the government during the 1930s.
- ❁ Without natural resources, Japanese leaders began looking toward neighbouring countries rich in natural wealth (In particular the Dutch East Indies, and Indo-China).


Tojo Hideki


- ❁ Member of the military group that exercised great influence in Japanese government.
 - ❁ Minister for War in 1940 – instrumental in getting Japan to join the Axis.
 - ❁ Becomes Prime Minister in 1941, dominating Japanese government. Authorized the attack on Pearl Harbour.
 - ❁ Resigned July 19th, 1944, as a result of Japan's loss of the Battle of Saipan (a battle which put the Japanese mainland in range of American bombers).
-
- ❁ Tojo and other military figures hoped that a quick defeat of the American carrier fleet at Pearl Harbour, along with American involvement in Europe, would cause the United States to negotiate for peace instead of fighting on both sides of the globe.





Midway Island

Timeline of some Pacific Battles:

 December 7th, 1941 – Pearl Harbour

 May 7-8th, 1942 – Battle of the Coral Sea

 June 4th, 1942 – Battle of Midway

 1942-1943 – American Invasion of Guadalcanal

 February 19th, 1945 – Battle of Iwo Jima



The famous picture from Iwo Jima